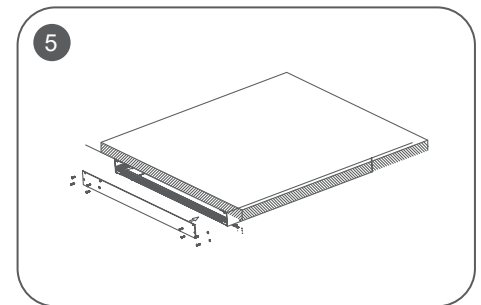
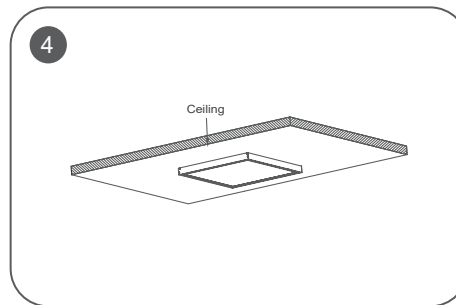
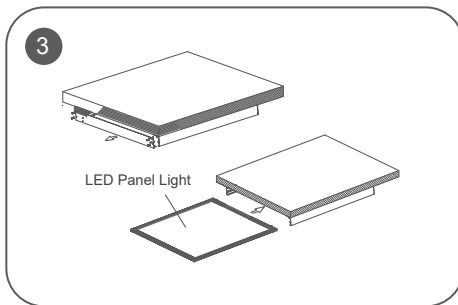
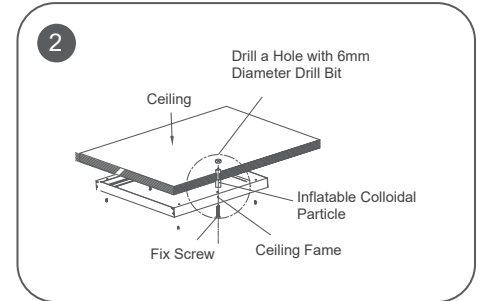
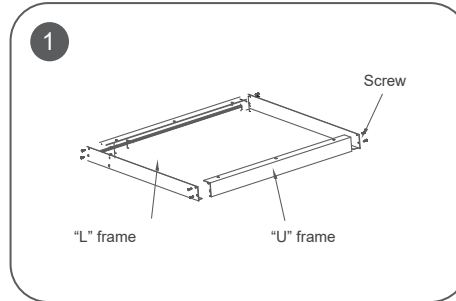


RGBW Series 2' X 4'

Surface Mount

1. Assemble the frame well
2. Fix the frame on ceiling
3. Take out one "L" bracket from the frame
4. Insert LED panel to the frame
5. Fix "L" bracket to the frame
6. Installation is Complete



Suspended

1. According to the width of the panel light, drill 2 mounting holes on the mounting position.
2. Button the panel light with the dog buckle of the equipped rope.
3. Twist off the rope grab device, and divide it into two parts: the upper cover and lower cover.
4. Fix the upper cover into prepared mounting holes with self-tapping screws (not included), and then twist on the lower cover.
5. Connect LED panel light by the hook of suspension wire.

